



OPEN SPACE PRESERVATION PROGRAM 2022-2025



ACKNOWLEDGEMENTS

Sunrise Recreation and Park District would like to thank those that came before us that had the foresight to preserve lands for the enjoyment of future generations.

The Sunrise Park staff has been maintaining these sites and their standards have been incorporated into this open space management plan. We wish we could add each of their names as co-authors in recognition of the work they have done.

The SRPD 2014 Advisory Board of Directors commissioned the original management plan so that the standards would be codified by policy for the preservation, management, and maintenance of the District's Open Space.

County of Sacramento Board of Supervisors

District 3 – Rich Desmond

District 4 – Sue Frost

2022 Advisory Board of Directors

David Huber – Board Chair

Tim Virga – Board Vice Chair

James Evans – Board Member

Mark Shahan - Board Member

District Staff

Dave Mitchell – District Administrator

Wayne Edmundson – Superintendent of Parks & Facilities

Jaime Fonseca – Park Supervisor

James Joseph – Park Supervisor

Doug Randle – Park Supervisor

John Repetti – Park Supervisor

Jeff Rivard – Park Supervisor

Editors

Jacqueline Coker – Administration

Michelle Patterson – Administration

This page intentionally left blank

TABLE OF CONTENTS

1.0	What is Open Space	1-2
2.0	The Value of Open Space	2-3
3.0	Open Space in the Sunrise Recreation and Park District	3
4.0	Maintenance Categories	3-5
5.0	Maintenance Levels	5-10
6.0	District Open Space Location Map	11
7.0	Open Space Individual Park Descriptions	
	• Antelope Community Park Nature Area	12-13
	• Arcade Creek Park Preserve	14-15
	• Cabana Nature Area	16-17
	• Cherry Creek East & West Open Space	18-19
	• Crosswoods Community Park Nature Area	20-21
	• Edgecliff Open Space	22-23
	• Foothill Community Park Nature Area	24-25
	• Indian River N. & S. and Tall Tree Open Space	26-27
	• Mariposa Open Space	28-29
	• Matheny Open Space	30-31
	• Northwoods Park Extension	32-33
	• Olivine Drive and Woodside Oaks	34-35
	• Shadowcreek Open Space	36-37
	• Stock Ranch Open Space	38-39
	• Sunrise Oaks Preserve	40-41
	• Tempo Park Nature Area	42-43
	• Titan Oak	44-45
	• Twin Creeks Open Space	46-47
	• Van Maren Park Nature Area	48-49
8.0	Open-Space Additional Maintenance-Schedule of Order	50
9.0	Agencies Supporting our Efforts	51

This page intentionally left blank

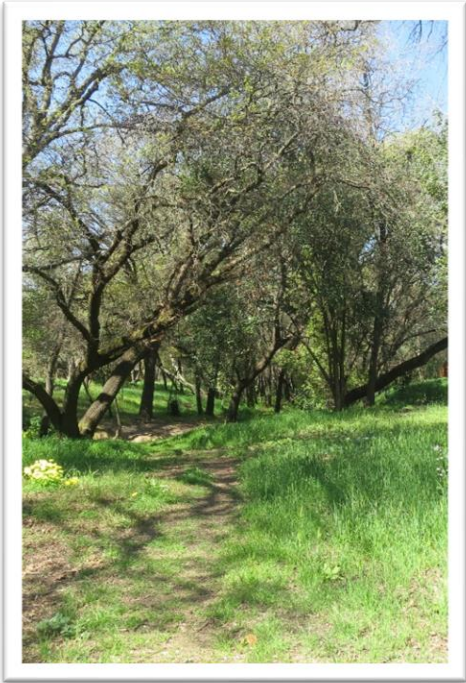
1.0 WHAT IS OPEN SPACE

“Open Space” lacks a consistent definition, but the phrase generally refers to land that is undeveloped or lightly developed for uses other than agriculture and is open to the public.

The State of California describes it this way:

Government code Section 65560 (b): “Open space land” is any parcel or area of land or water which is essentially unimproved and devoted to an open space use as defined in this section, and which is designated on a local, regional, or state open space plan as any of the following:

- Open space for the preservation of natural resources including, but not limited to, areas required for the preservation of plant and animal life, including habitat for fish and wildlife species; areas required for ecologic and other scientific study purposes; rivers, streams, bays and estuaries; and coastal beaches, lake shores, banks of rivers and streams, and watershed lands.
- Open space used for the managed production of resources, including but not limited to, forest lands, rangeland, agricultural lands, and areas of economic importance to produce food or fiber; areas required for recharge of ground water basins; bays, estuaries, marshes, rivers, and streams which are important for the management of commercial fisheries; and areas containing major mineral deposits, including those in short supply.
- Open space for outdoor recreation, including but not limited to, areas of outstanding scenic, historic, and cultural value; areas particularly suited for park and recreation purposes, including access to lake shores, beaches, and rivers and streams; and areas which serve as links between major recreation and open-space reservations, including utility easements, banks of rivers and streams, trails, and scenic highway corridors.
- Open space for public health and safety, including, but not limited to, areas which require special management or regulation because of hazardous or special conditions such as earthquake fault zones, unstable soil areas, flood plains, watersheds areas presenting high risks, areas required for the



Cherry Creek Open Space

protection of water quality and water reservoirs and areas required for the protection and enhancement of air quality.

2.0 THE VALUE OF OPEN SPACE

Sunrise Recreation and Park District is fortunate to have within its boundaries 185.71 acres of undeveloped park sites, open space or preserves. These areas allow the public a place where they can walk and explore the natural world within the developed urban community they live within, and these may be the only areas where some persons encounter wildlife and other aspects of nature.

Open spaces do many things for the natural environment and for the human spirit:

- Maintain people's connection to the land.
- Minimize and restore the loss of critical Wildlife habitat.
- Provide passive recreation opportunities.
- Provide opportunities for Sunrise's Residents to learn about the environment.
- Enhance the quality of life through the preservation of a dwindling local resource.

Quiet Places and Open Spaces

- Have you seen the first rays of the sunrise reflecting on the still waters of the creek at the Arcade Creek Park Reserve?
- Or Sat on a bench to observe a Red Winged Blackbird swoop and clutch a reed in the cattails at the Stock Ranch Open Space?
- Isn't it amazing to hear the leaves rustling in the trees while the sounds of the birds are chirping around you at the Edgecliff Open Space?
- Have you watched a hawk circle an open space watching for the movement of its prey?
- Isn't it refreshing to see an oasis of natural landscape in the midst of urban development?

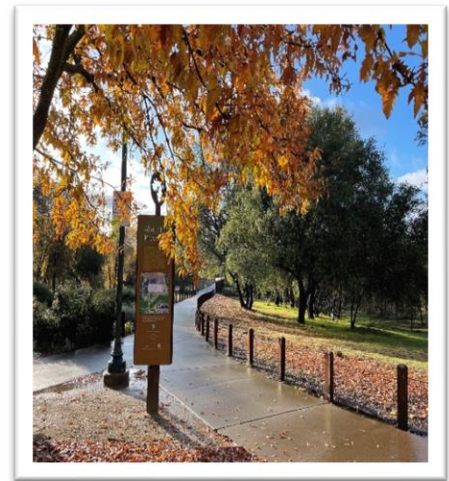
- Do you appreciate walking down a trail with sunrays filtering through the treetops?
- Or the cool walk next to the creek at Tempo Park?

3.0 OPEN SPACE IN THE SUNRISE RECREATION AND PARK DISTRICT

In the District, there are several parcels and corridors of land that undoubtedly improve the quality of our lives by providing quiet places and open spaces. Sunrise has intentionally established guidelines for the long-term care and preservation of these valuable resources.

These places have aesthetic, recreational, cultural, educational, and natural resource values that need to be conserved for today, tomorrow and for future generations.

Responsible stewardship must be practiced in spaces that we have in order to properly care for them and pass them on to the next generation.



Stock Ranch Open-Space

Within these pages, discover the location and features of Sunrise’s Open Spaces and learn more about the issues, benefits, opportunities, and challenges facing those charged with its stewardship.

Sunrise Recreation and Park District is fortunate to be the steward of 185.71 acres of open spaces and preserves that are located within our District boundaries’. These areas allow the public a place where they can walk and explore the Natural world within the developed urban community.

4.0 MAINTENANCE CATEGORIES

4.1 Trail Maintenance

Trails are divided into two types, primary and secondary trails.

*Primary Trails** fall into two categories:

- *District made trails* – trails that were master planned to meet community expectations and are paved.
- *User worn trails* - At some sites the users have worn trails that have been used by multiple persons. These trails were not constructed to meet any design criteria and only receive minimum maintenance.

The District will maintain safety concerns within 6’ of the edge of the primary trail. Hazardous conditions along the primary trails will be mitigated or removed when it is observed by or reported to District Staff.

*Secondary trails**- are those trails which may be incidental to the main trail and are used by park users and wildlife but are left in the natural state so that users may fully enjoy nature possible by walking and exploring the site without being limited to the restrictions of staying on the primary or main trail.

4.2 Curb Appeal and Security

All District Open-Space sites will be kept in a clean condition along public streets, sidewalks and under the post and cable. The post and cable will be maintained in a safe condition that will keep motorized vehicles out of the park site. Gates, cables, and bollards will be locked except when District vehicles are entering or exiting the site.

4.3 Plant & Weed Management

Vegetation growing under the post and cable will be sprayed, mowed, or otherwise controlled to within 36” of the sidewalk or curb. Blackberries, Ivy, and Poison Oak will be controlled when directed by the Park Superintendent. Poison Oak will be removed within 6’ from the center of the primary trails or within 6’ from the edge of a paved trail. Herbicide will only be used when accompanied with an Ag permit detailing the use.

4.4 Tree Maintenance

Trees naturally fall at the end of their life. When a tree falls, the downed wood decays and forms habitat for wildlife, for this reason we will leave downed wood if it does not pose a safety concern to the park user. The District will follow the approved District Tree Inventory Master Plan and its Policies and Guidelines. Dead wood larger than 2” and hangers within 6’ of public amenities or primary trails will be removed or mitigated.

When removing a tree, the stump will be left at chest height so that the mowers can see the stump when they are mowing firebreaks. If stumps are lower than 48", then they will be cut close to the ground and the stumps ground, so they do not pose a tripping problem for park patrons or a hazard for the firebreak tractors.

4.5 Wildlife Management

The District does not manage animals. The City of Citrus Heights, County of Sacramento, and the State of California have specific agencies to assist in Wildlife Management. Animals are considered part of nature and do live in the Open Space areas of the District.

4.6 Natural Grass Fire Break Mowing

During the spring months after the rains have stopped, in some areas, District Staff will mow natural grasses to create firebreaks and additional fire protection. Please see each park map for specific areas.



Antelope Community Park Nature Area

5.0 MAINTENANCE LEVELS

This plan outlines a management plan for each open space or nature area, including a brief history of the general Goal for each property, Past and Ongoing Maintenance practices, Proposed Additional Maintenance for 2017-2020, the Current Maintenance Level, and any Proposed New Amenities.

There are three types of maintenance levels in the Open Space sites noted by Level 1 through Level 3.

Each level increases the type of maintenance performed at the site.

5.1 Level 1 Maintenance

The basic maintenance level to be performed at all Sunrise's Open-Space Sites. This level may include additional items when directed by the Park Superintendent.

Monthly

- Litter cleanup & removal within 100' of street or roadway.

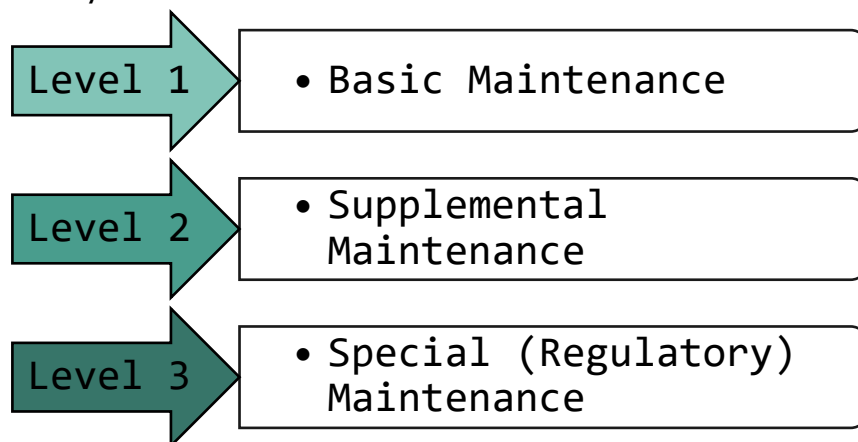
On-Going

Bollards will be sprayed for weed prevention and clean up. The areas within 36" of the bollards will be mowed in the spring. Pre-emergent to be used prior to rain event in fall.

- Take down tree forts and hanging ropes.
- Fire breaks will be mowed twice in the Spring with the final mowing in June before the July 4th holiday.
- Tree maintenance within 6' of edge of primary trails.

As Assigned

- Walk of the primary trail removing any hazards (i.e., protrusion hazards, poison oak etc.) found within 6' from the center of the primary trail.



- Fallen trees will be removed the width of the primary trail but might be left on secondary trails.

- Brush from Trail maintenance activities will be chipped on site.
- Downed trees and brush are to be left on site in a natural fallen position to form habitat for wildlife. When not interfering with a neighboring home or primary trail.

5.2 Level 2 –Maintenance

Includes the items found in level 1, plus additional work.

Weekly

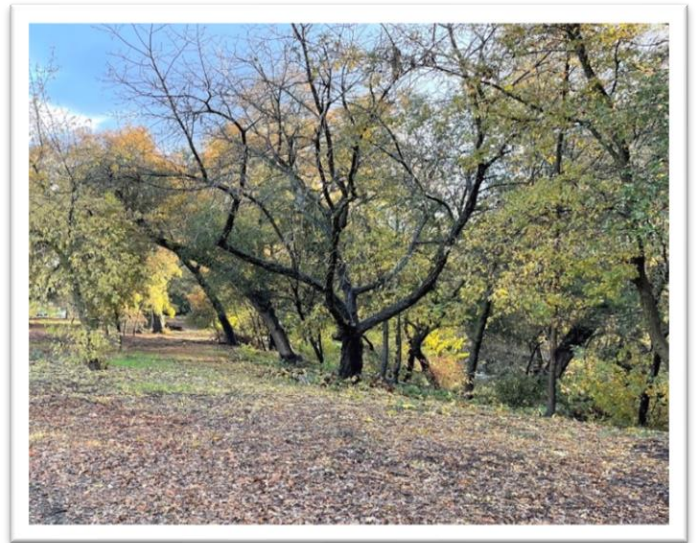
- Play equipment inspected.
- Exercise equipment inspected.
- Facility equipment inspected weekly and repaired as needed or reported to Supervisor.
- Litter Picked Up, Trash removed, and paved trails blown off.

Monthly

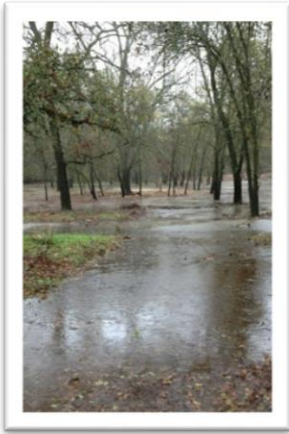
- Removal and control of Himalayan blackberries and other invasive species within the park site boundaries.
- Improved trails to be repaired as needed.

Pre-Heavy Rain Event *(1/2" or more within 4 hours)*

- Primary Trail shall be barricaded to inform public on the condition of the trail during expected storm.



Crosswoods Community Park Nature Preserve



Arcade Creek Park

After Flooding (primarily at Tempo and Arcade Creek Park Preserve)

- Bridges and Pathways are to be inspected annually and after flooding events.
- Primary Trail shall be cleaned after flooding and pathway should be cleaned or barricaded between storms to inform public on the condition of the trail.
- Ditches that flow into the creek should be checked and erosion concerns.
- Rocks on banks shall be inspected after floods and rocks replaced if feasible.

5.3 Level 3 Maintenance

Includes the items found in level 1 and 2 plus additional work:

This area is commonly known as the Stock Ranch Open Space. It does include the demonstration garden and educational venue of the Stock Ranch Open Space behind Walmart and Costco but does not include Van Maren Park.

Staff hours must be logged for reimbursement from the City's landscape maintenance assessment district. (LMAD)

This site has an Open Space Management Plan that has been approved by the Army Corps of Engineers. Any work outside of this plan requires permits and approval from:

- ✓ *Army Corps of Engineers,*
- ✓ *California Fish and Wildlife*
- ✓ *California Regional Water Quality Control Board.*

'Special Notes' pertaining to the Stock Ranch Open Space site:

- *Trails are not to be improved without approval from Army Corps of Engineers.*
- *Downed trees and brush are to remain as habitat unless Fire Department orders removal. If a hanging limb creates a public hazard, it should be put on the ground to minimize the hazard otherwise trees should be left alone and not maintained.*

- *Current improved trails shall be maintained.*
- *Chemicals are not to be used within the Open Space unless noted.*

Daily

- All time shall be logged to the closest quarter hour and given to the supervisor of the site. Travel time to and from the site may be included.
- Invoices for all expenses incurred at this this site shall be given to the supervisor.

Weekly

- Litter control within 40' of all pathways and pedestrian bridge.
- Garbage can service and blowing off pathways.
- Inspection of tables, benches, educational site amenities for damage. Report any damage to site Supervisor.
- Trails shall be blown off weekly and as often as conditions require for safety or aesthetic reasons.

Monthly

- Litter and trash control of the interior of the open space.
- Tree stakes should be removed from newly planted trees when no longer a benefit to that tree.

In the Spring and Early Summer

- Mechanical weed abatement (mowing) maybe needed for fire protection, do not damage trees.
- Spraying of pesticides is allowed under post and cable. Spraying of chemicals not to exceed 36" from concrete walk or curb. Any Chemicals listed by the Ag Recommendation may be used in this area. Do not allow drift. Keep chemicals on target.



Cherry Creek

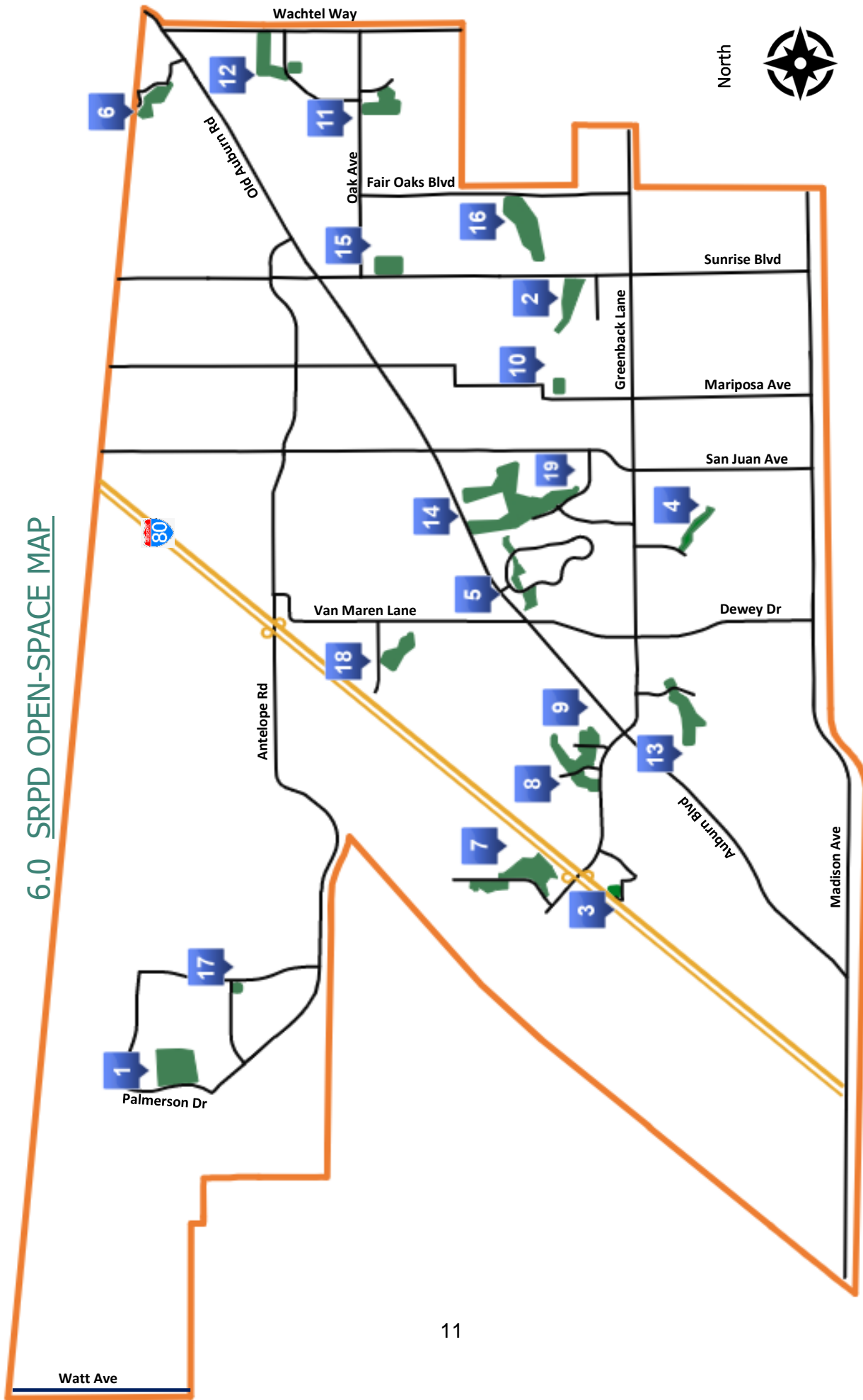
Annually

- Maintain the post and cable.
- Checking of the wooden bridge for loose hardware, do not crush wood fibers. Apply Copper Napthenate or pentachlorophenol to newly exposed wood.
- Checking of the trail, lights, benches and worn or damaged to signs shall be logged.
- Contract with Wetland Consultant in September to inspect site and prepare Annual Report by end of November.
- Report Generated by Wet Land Consultants and mailed to the Army Corps of Engineers by December.
- Removal and control of Himalayan Blackberries and other invasive species. Goats may be used when approved by Superintendent and Army Corps of Engineers. Chemicals may not be used unless approved by the Army Corps of Engineers.



Stock Ranch Nature Preserve

6.0 SRPD OPEN-SPACE MAP



- 1. Antelope Community Park Nature Area
- 2. Arcade Creek Park Preserve
- 3. Cabana Nature Area
- 4. Cherry Creek Open Space
- 5. Crosswoods Community Park Nature Area
- 6. Edgecliff Open Space
- 7. Foothill Community Park Nature Area
- 8. Indian River & Tall Tree Open Space
- 9. Matheny Open Space
- 10. Mariposa Open Space
- 11. Northwoods Park Extension
- 12. Olivine Dr & Woodside Oaks
- 13. Shadowcreek Open Space
- 14. Stock Ranch Open Space
- 15. Sunrise Oaks Preserve
- 16. Tempo Park Nature Area
- 17. Titan Oak
- 18. Twin Creeks Open Space
- 19. Van Maren Park Nature Area

Antelope Community Park Nature Area
8010 Palmerson Dr., Antelope
16.95 Acres



Park
Boundary

Primary
Trails

Stream or
Waterway

Seasonal
Mowing

Fuel
Reduction



Management Highlights

Goal

To provide a natural experience within a developed park.

Past and Ongoing Maintenance

- Litter removal
- Mow sections as defined by map
- Maintain DG pathways
- Maintain current post and cable

Proposed Additional Maintenance for 2022-2025

- None

Maintenance Level

- Level 2

Proposed Amenities

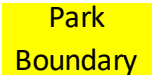
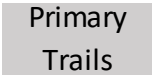
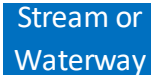
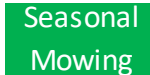


- None



Antelope Community Park Nature Area

Arcade Creek Park Preserve
6377 Bonham Circle, Citrus Heights
10.12 Acres



 Park Boundary	 Primary Trails	 Stream or Waterway	 Seasonal Mowing	 Fuel Reduction	
---	--	--	--	--	---

Management Highlights

Goal

To provide a total developed park with a completely natural experience and setting.

Past and Ongoing Maintenance

- Semiweekly pick-up trash and litter
- Assist city with Creek Week activities annually
- Clear pathways of debris after a flood event
- Berry and Poison Oak removal
- Mow the meadow area of the park

Proposed Additional Maintenance for 2022-2025

- Fuel reduction north side of the creek

Maintenance Level

- Level 2

Proposed Amenities

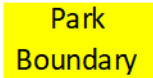
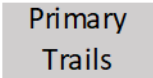
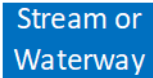
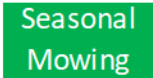
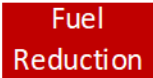

- None



Arcade Creek Park Preserve

Cabana Nature Area
6251 Fremont Circle, Sacramento
.5 Acres



 Park Boundary	 Primary Trails	 Stream or Waterway	 Seasonal Mowing	 Fuel Reduction	
--	---	---	---	---	---

Management Highlights

Goal

To maintain the open space in a natural setting that provides walkability and connectivity for the neighborhood.

Past and Ongoing Maintenance

- Litter removal
- Assist city with Creek Week activities annually

Proposed Additional Maintenance for 2022-2025

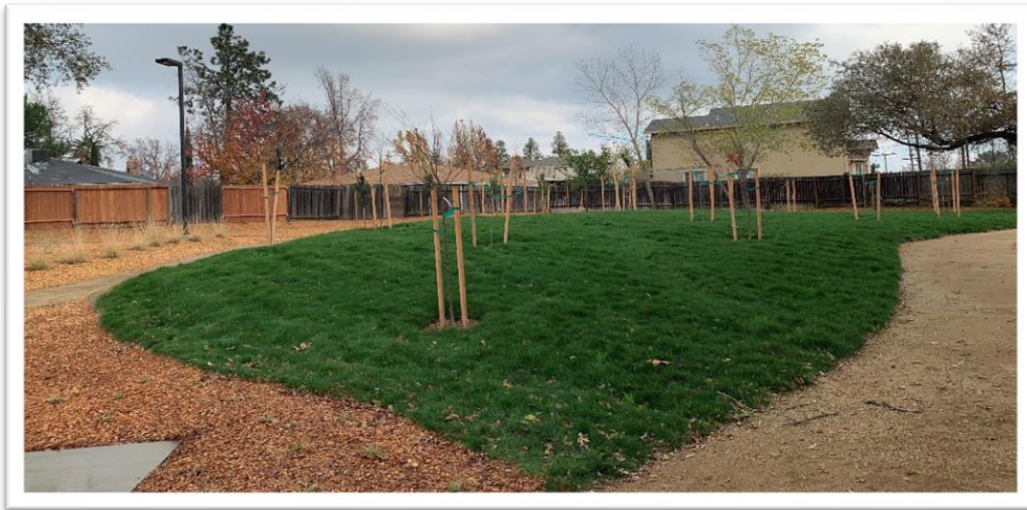
- None

Maintenance Level

- Level 1

Proposed Amenities

- None



Cabana Park Nature Area

Cherry Creek East &
West Open Space
6011 Brooktree Dr.
Citrus Heights
6.51 Acres



Park
Boundary

Primary
Trails

Stream or
Waterway

Seasonal
Mowing

Fuel
Reduction



Management Highlights

Goal

To maintain walkability on Cherry Creek East and a natural setting for Cherry Creek West Open Space.

Past and Ongoing Maintenance

- Litter removal
- Assist city with Creek Week activities annually
- Mow sections as defined by map
- Cherry Creek West to be brought back to Management Guidelines standards
- Assist city in cleanup of their landlocked parcels
- Maintain current post and cable

Proposed Additional Maintenance for 2022-2025

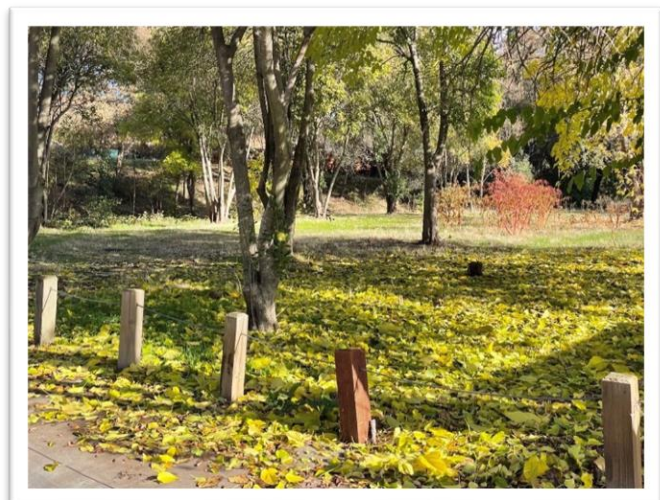
- Cherry Creek West area to be brought back to Management Guidelines Standards
- Cherry Creek East - None

Maintenance Level

- Level 1

Proposed Amenities

- None



Cherry Creek Open-Space

Crosswoods Community Park Nature Area
6742 Auburn Blvd.
Citrus Heights
12.00 Acres



Park
Boundary

Primary
Trails

Stream or
Waterway

Seasonal
Mowing

Fuel
Reduction



Management Highlights

Goal

To maintain all areas of Crosswoods Community Park Nature Area in a natural setting with no primary trails.

Past and Ongoing Maintenance

- Litter removal
- Assist city with Creek Week activities annually
- Mow sections as defined on map
- Maintain current post and cable

Proposed Additional Maintenance for 2022-2025

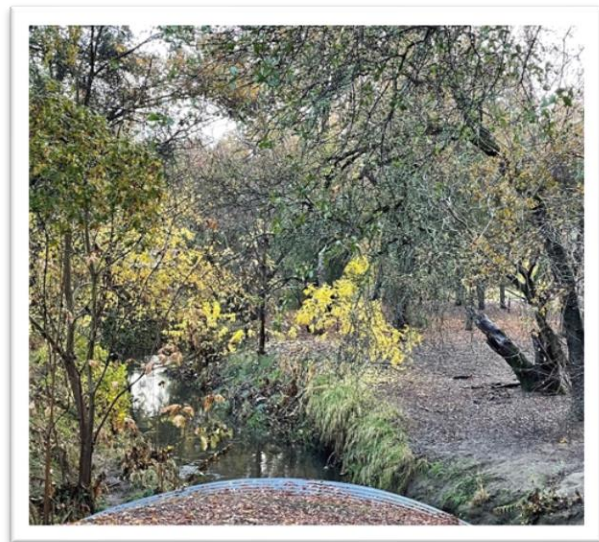
- Install property boundary markers across the creek from the tennis courts
- Overall fire fuel reductions

Maintenance Level

- Level 1

Proposed Amenities

- None



Crosswoods Community Park Nature Area

Edgecliff Open Space
8233 Newbridge Way, Citrus Heights
8.75 Acers



Park
Boundary

Primary
Trails

Stream or
Waterway

Seasonal
Mowing

Fuel
Reduction



Management Highlights

Goal

To maintain Edgecliff open space in a natural setting that provides walkability and connectivity for the neighborhood.

Past and Ongoing Maintenance

- Litter removal
- Assist city with Creek Week activities annually
- Mow sections as defined on map
- Maintain current post and cable
- (4) Oaks have received weight reduction

Proposed Additional Maintenance for 2022-2025

- None

Maintenance Level

- Level 1

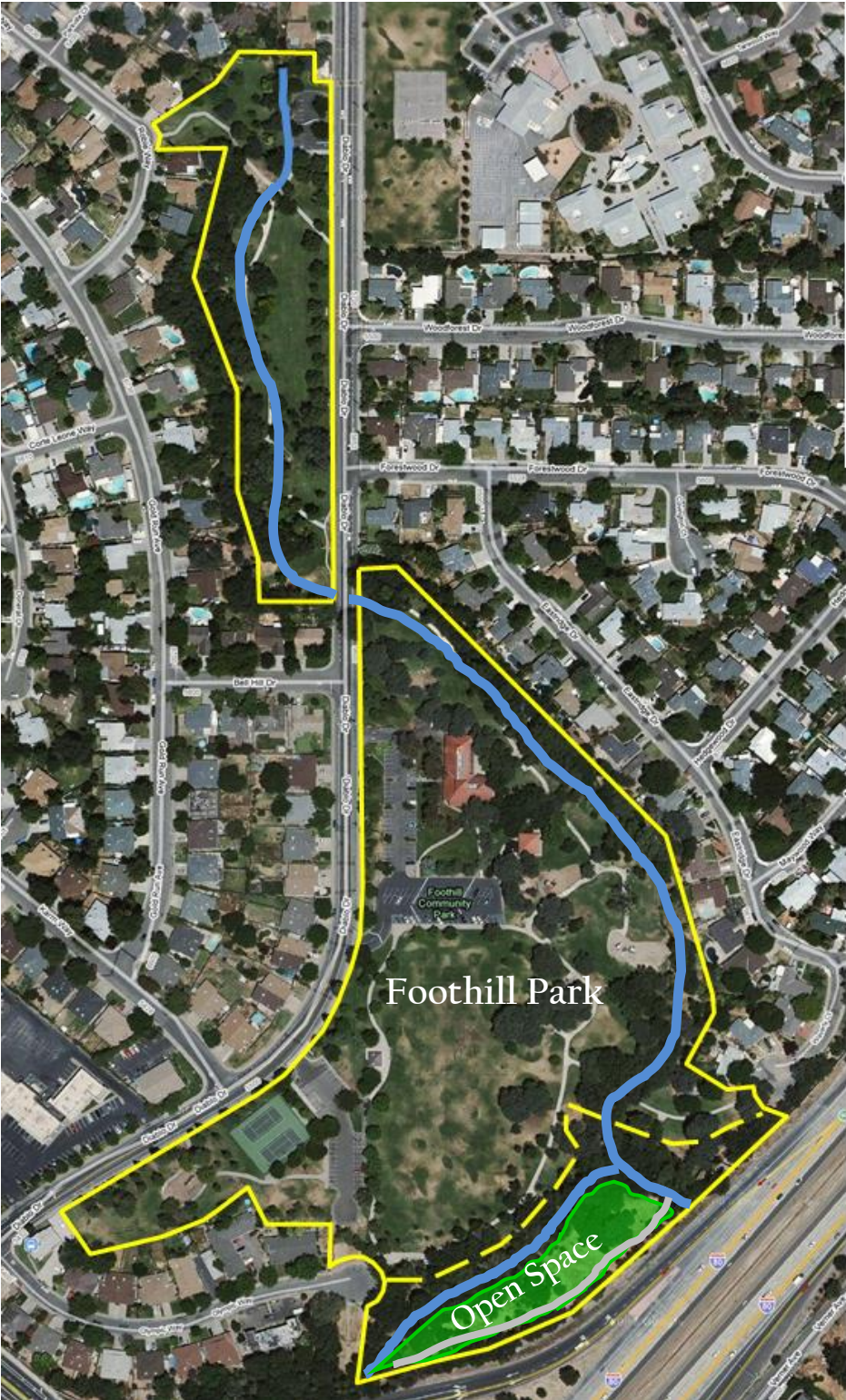
Proposed Amenities

- None



Edgecliff Open-Space

Foothill Community Park Nature Area
5510 Diablo Dr., Sacramento
4.0 Acres



Park Boundary

Primary Trails

Stream or Waterway

Seasonal Mowing

Fuel Reduction



Management Highlights

Goal

To provide a natural experience within a developed park.

Past and Ongoing Maintenance

- Litter removal
- Assist city with Creek Week activities annually
- Mow section between creek and highway

Proposed Additional Maintenance for 2022-2025

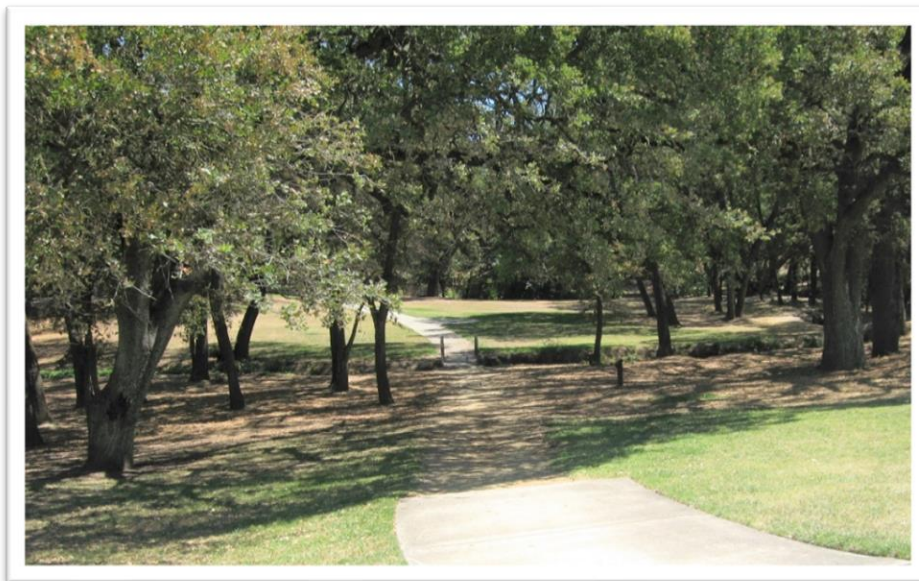
- Complete cleaning of the highway fence line

Maintenance Level

- Level 1

Proposed Amenities

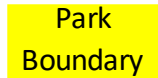
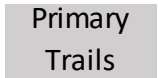
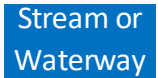
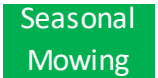


- Future splash pad



Foothill Community Park Nature Area

Indian River North & South and Tall Tree Open Space
6430 Indian River Dr., Citrus Heights
10.57 Acres



 Park Boundary	 Primary Trails	 Stream or Waterway	 Seasonal Mowing	 Fuel Reduction	
---	--	--	--	--	---

Management Highlights

Goal

To maintain a natural setting.

Past and Ongoing Maintenance

- Litter removal
- Assist city with Creek Week activities annually
- Mow sections as defined on map
- Maintain current post and cable

Proposed Additional Maintenance for 2022-2025

- Indian River - Fuel reduction east side of creek
- Tall Tree - Fuel reduction west side of creek

Maintenance Level

- Level 1

Proposed Amenities

- None



Indian River Open-Space

Mariposa Open Space
6720 Mariposa Ave
Citrus Heights
4.57 Acres



Park
Boundary

Primary
Trails

Stream or
Waterway

Seasonal
Mowing

Fuel
Reduction



Management Highlights

Goal

To maintain the property in an open natural setting with reduced amounts of Natural fuel.

Past and Ongoing Maintenance

- Litter removal
- Assist city with Creek Week activities annually

Proposed Additional Maintenance for 2022-2025

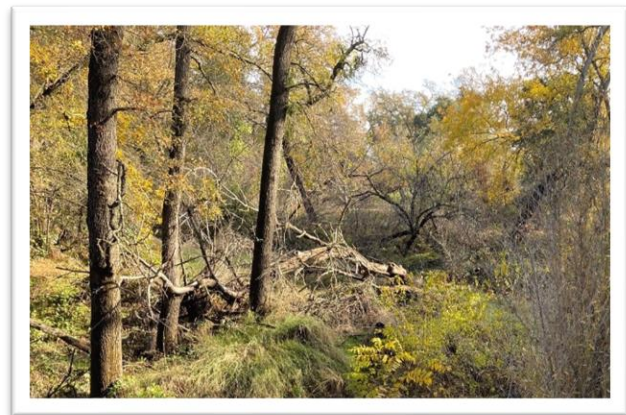
- Complete fuel reduction

Maintenance Level

- Level 1

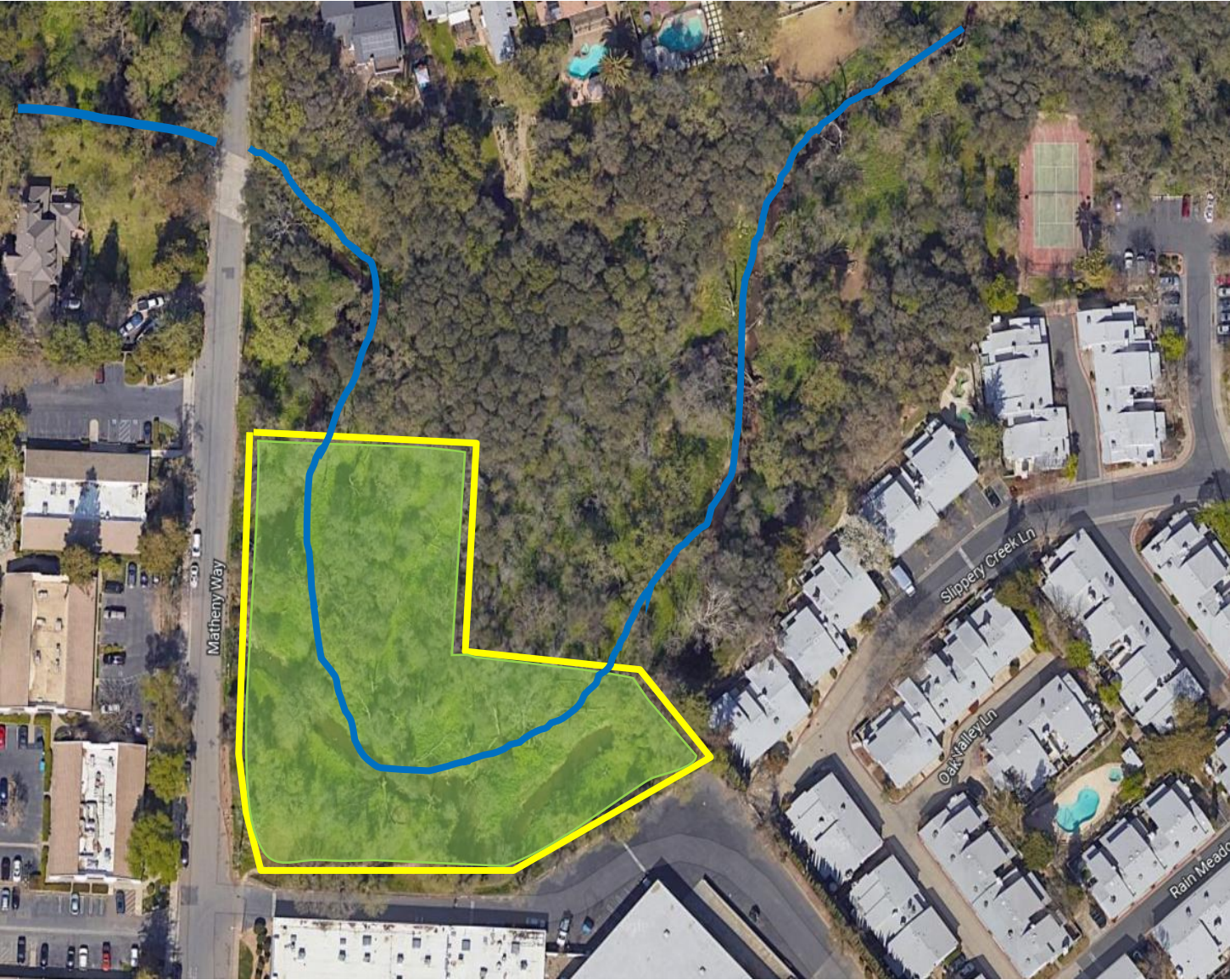
Proposed Amenities

- Multi-use trail



Mariposa Open Space

Matheny Open Space
Matheny Way, Citrus Heights
1.91 Acres



Legend:

- Park Boundary** (Yellow box)
- Primary Trails** (Grey box)
- Stream or Waterway** (Blue box)
- Seasonal Mowing** (Green box)
- Fuel Reduction** (Red box)
- North** (Compass rose icon)

Management Highlights

Goal

To maintain the property in an open natural setting with reduced amounts of Natural fuel.

Past and Ongoing Maintenance

- Litter removal
- Assist city with Creek Week activities annually
- Mow complete park
- Maintain current post and cable

Proposed Additional Maintenance for 2022-2025

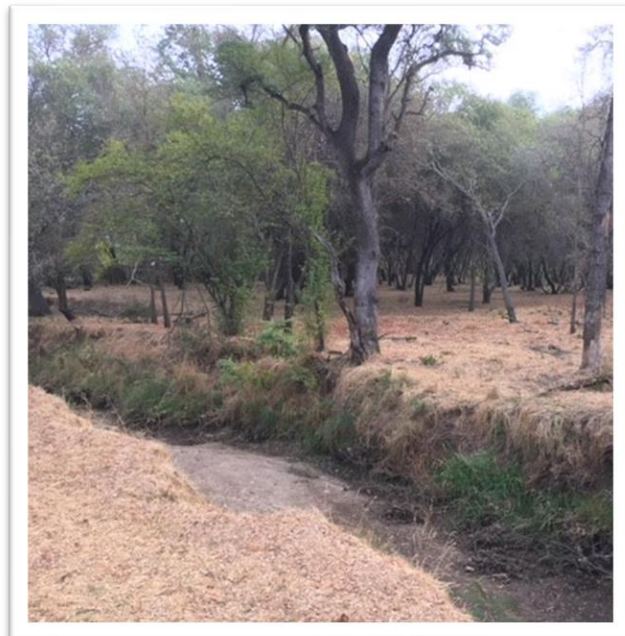
- Complete area to be brought back to Management Guidelines Standards
- Complete log removal

Maintenance Level

- Level 1

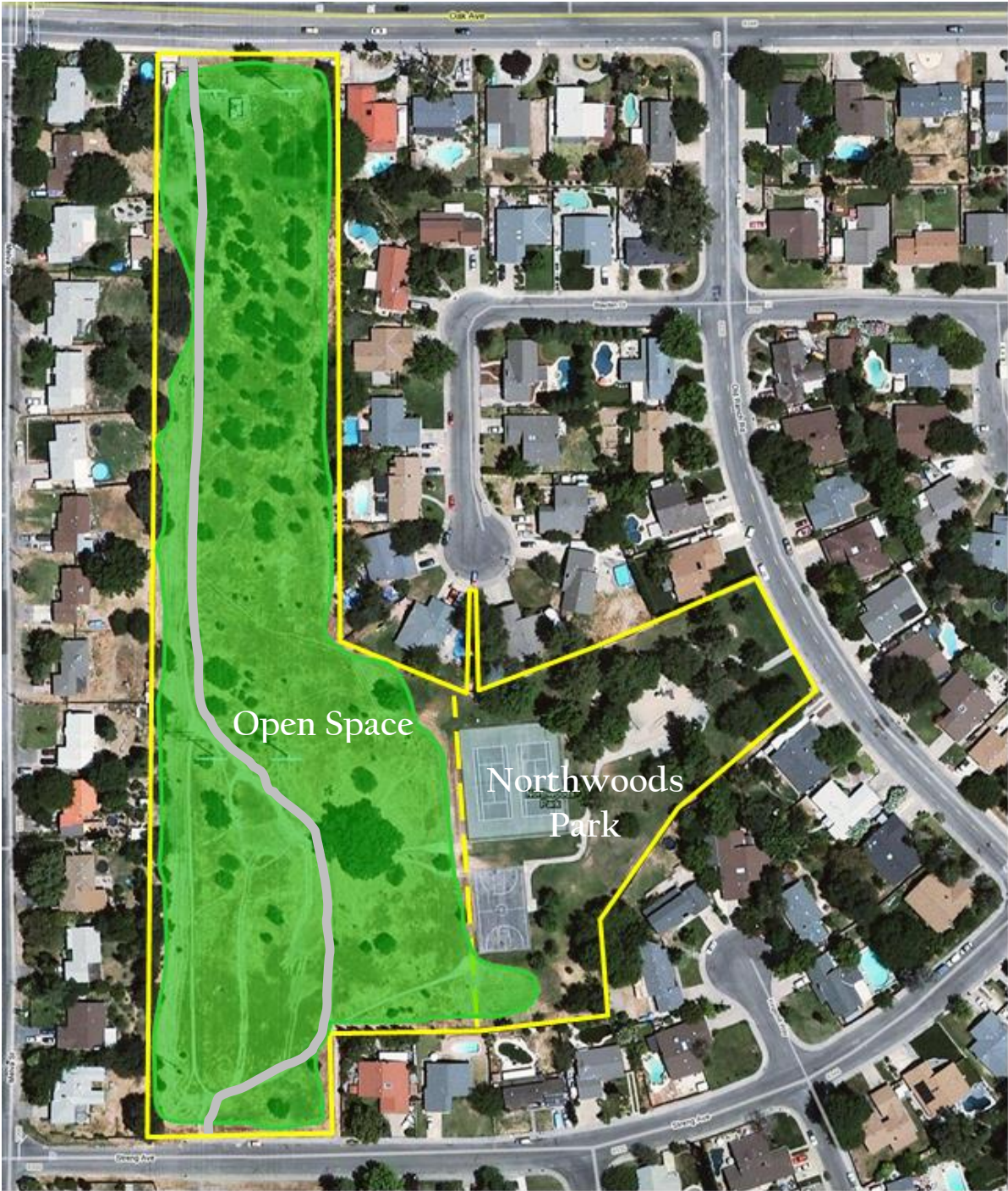
Proposed Amenities

- None



Matheny Open Space

Northwoods Park Extension
8236 Old Ranch Rd., Citrus Heights
5.00 Acres



Park
Boundary

Primary
Trails

Stream or
Waterway

Seasonal
Mowing

Fuel
Reduction



Management Highlights

Goal

To maintain the open space in a natural setting that provides walkability and connectivity for the neighborhood.

Past and Ongoing Maintenance

- Litter removal
- Assist city with Creek Week activities annually
- Mow spaces as defined on map
- Maintain current post and cable

Proposed Additional Maintenance for 2022-2025

- None

Maintenance Level

- Level 1

Proposed Amenities

- Arcade Cripple Creek multi-use trail system



Northwoods Park Extension

Olivine Drive & Woodside Oaks
8041 Olivine Ave., Citrus Heights
4.83 Acres



Park Boundary

Primary Trails

Stream or Waterway

Seasonal Mowing

Fuel Reduction



Management Highlights

Goal

To maintain the open space in a natural setting that provides walkability and connectivity for the neighborhood.

Past and Ongoing Maintenance

- Litter removal
- Assist city with Creek Week activities annually
- Mow spaces as defined on map
- Maintain current post and cable

Proposed Additional Maintenance for 2022-2025

- None

Maintenance Level

- Level 1

Proposed Amenities

- Arcade Cripple Creek multi-use trail




Olivine Open-Space

Shadowcreek Open Space
6250 Woodcreek Dr., Citrus Heights
11.39 Acres



Park Boundary **Primary Trails** **Stream or Waterway** **Seasonal Mowing** **Fuel Reduction** **North**



Management Highlights

Goal

To maintain the open space in a natural setting that provides walkability and connectivity for the neighborhood.

Past and Ongoing Maintenance

- Litter removal
- Assist city with Creek Week activities annually
- Mow sections as defined on map
- Maintain landscaped areas
- Keep culvert free from debris

Proposed Additional Maintenance for 2022-2025

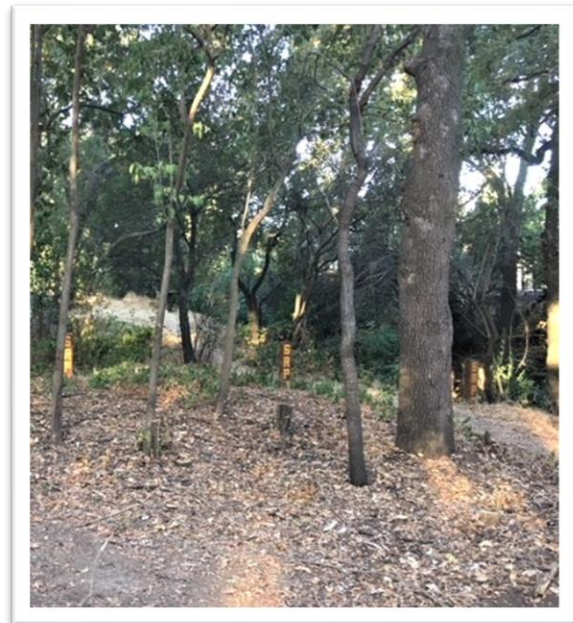
- Fuel Reduction from Woodleigh Drive, west to property line

Maintenance Level

- Level 1

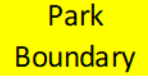
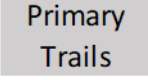
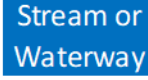
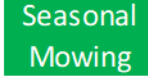
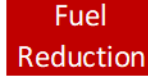

Proposed Amenities

- None



Shadowcreek Open Space



 Park Boundary	 Primary Trails	 Stream or Waterway	 Seasonal Mowing	 Fuel Reduction	
---	--	--	---	--	---

Management Highlights

Goal

To maintain the open space in a natural setting that provides walkability and connectivity for the neighborhood.

Past and Ongoing Maintenance

- Litter removal
- Assist city with Creek Week activities annually
- Mow sections as defined on map
- Maintain landscaped areas
- Maintain post and cable
- Inspection of tables, benches, and educational site amenities for damage

Proposed Additional Maintenance for 2022 – 2025

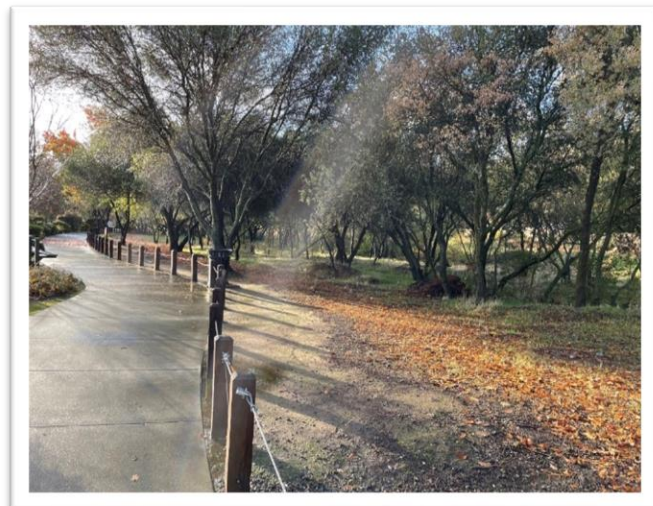
- None

Maintenance Level

- Levels 1, 2 and 3

Proposed Amenities

- None



Stock Ranch Open Space

Sunrise Oaks Preserve
7226 Sunrise Blvd., Citrus Heights
5.51 Acres



Legend:

- Park Boundary** (Yellow box)
- Primary Trails** (Grey box)
- Stream or Waterway** (Blue box)
- Seasonal Mowing** (Green box)
- Fuel Reduction** (Red box)
- North** (Compass rose icon)

Management Highlights

Goal

To maintain this site at a Level 1 Open Space Maintenance standard and preserve the natural features of the site for future generations to enjoy. This site was set aside for Native Oaks.

Past and Ongoing Maintenance

- Litter removal
- Assist city with Creek Week activities annually
- Mow complete park
- Prune trees along sidewalk
- Maintain current post and cable

Proposed Additional Maintenance for 2022-2025

- Complete log removal
- Tree skirt raising north side of property near school

Maintenance Level

- Level 1

Proposed Amenities

- Park sign



Sunrise Oaks Preserve

Tempo Park Nature Area
6000 Clear Creek Ct.
Citrus Heights
10.00 Acres



Park
Boundary

Primary
Trails

Stream or
Waterway

Seasonal
Mowing

Fuel
Reduction



Management Highlights

Goal

To provide a natural experience within a developed park.

Past and Ongoing Maintenance

- Litter removal
- Maintain current post and cable
- Maintain DG pathways
- Mow sections as defined on map
- Weed control in nature area off Larwin
- Clear walking paths after flooding event
- Keep culvert clear of debris

Proposed Additional Maintenance for 2022-2025

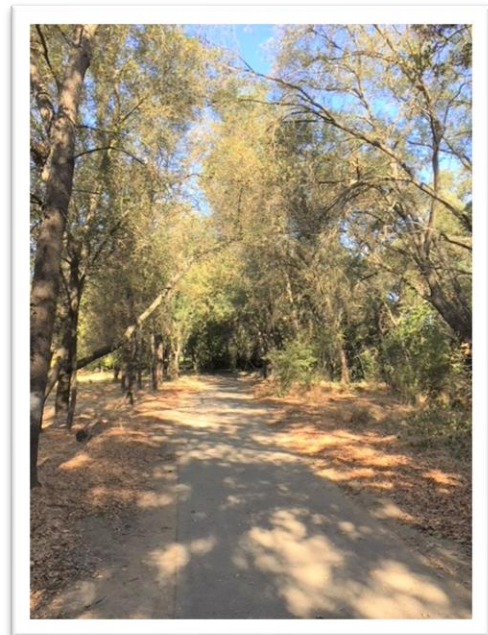
- None

Maintenance Level

- Level 2

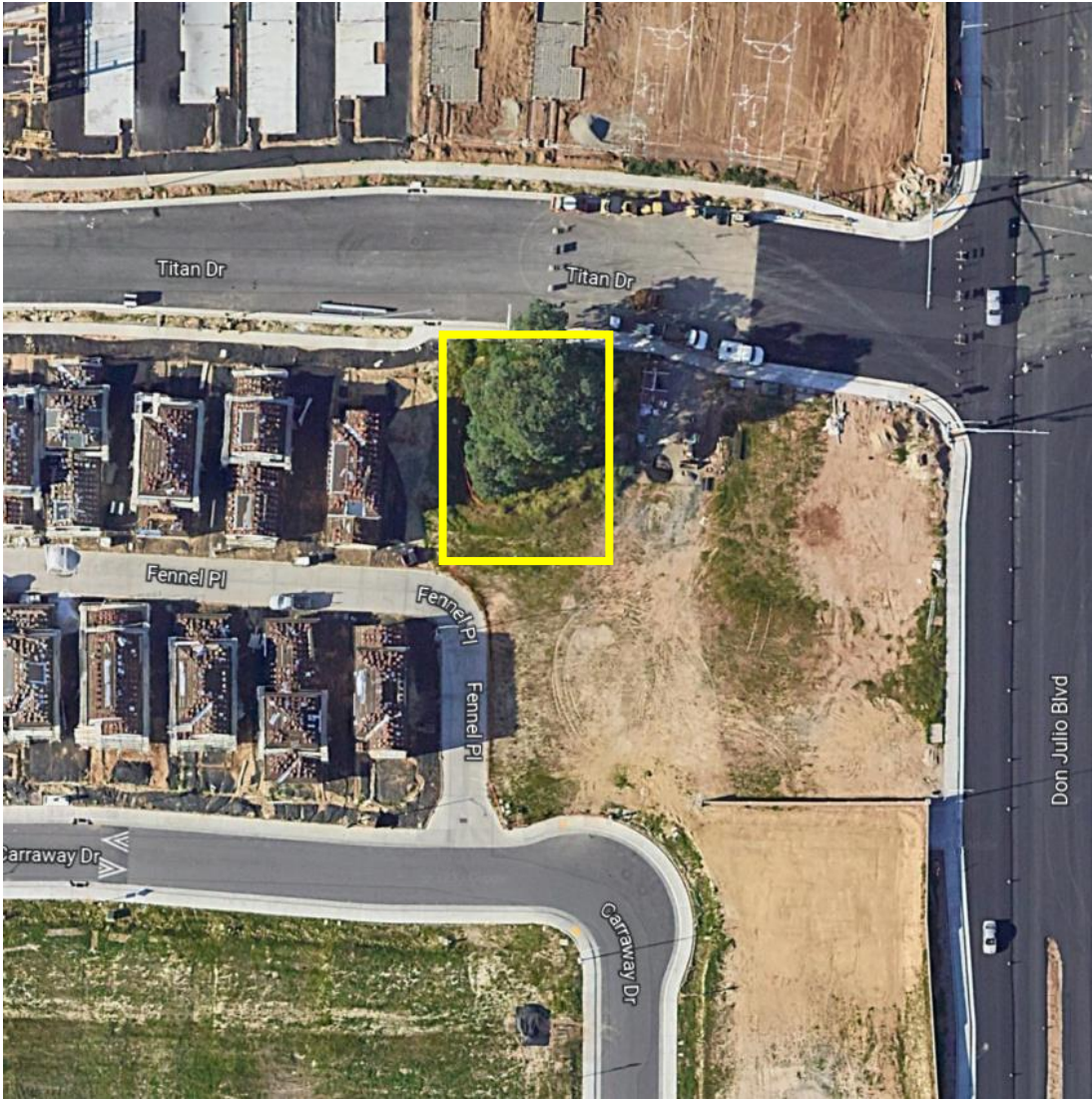
Proposed Amenities

- Arcade Cripple Creek multi-use trail



Tempo Park Nature Area

Titan Oak
Titan Drive & Don Julio Blvd.
Antelope
.21 Acres



Park Boundary **Primary Trails** **Stream or Waterway** **Seasonal Mowing** **Fuel Reduction** **North**

Management Highlights

Goal

To maintain the open space in a natural setting.

Past and Ongoing Maintenance

- Litter removal

Proposed Additional Maintenance for 2022-2025

- None

Maintenance Level

- Level 1

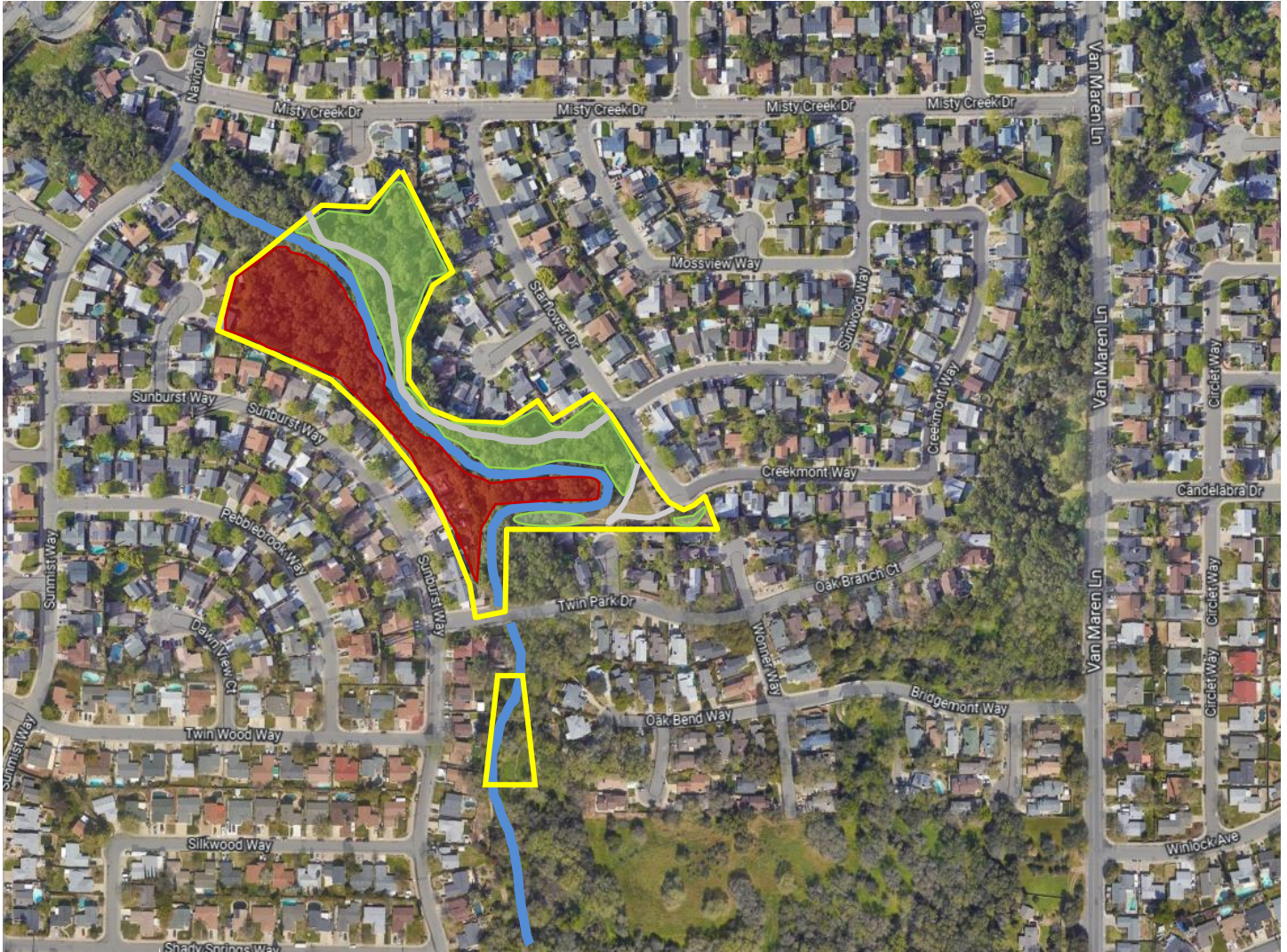
Proposed Amenities

- None



Titan Oak

Twin Creeks Open Space
7201 Starflower Dr.
Citrus Heights
7.55 Acres



Park
Boundary

Primary
Trails

Stream or
Waterway

Seasonal
Mowing

Fuel
Reduction



Management Highlights

Goal

To maintain the open space in a natural setting that provides walkability and connectivity for the neighborhood.

Past and Ongoing Maintenance

- Litter removal
- Assist city with Creek Week activities annually
- Mow sections as defined on map
- Maintain landscaped areas
- Maintain current post and cable

Proposed Additional Maintenance for 2022-2025

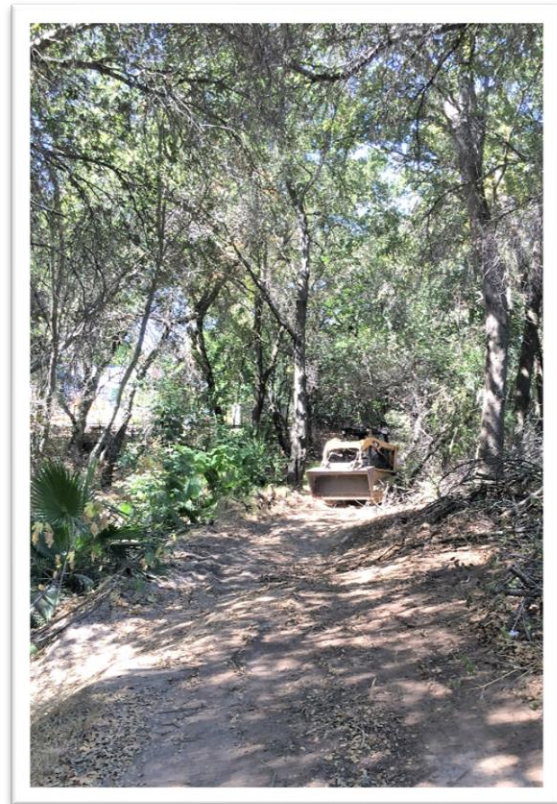
- Fuel reduction southwest side of creek

Maintenance Level

- Level 1

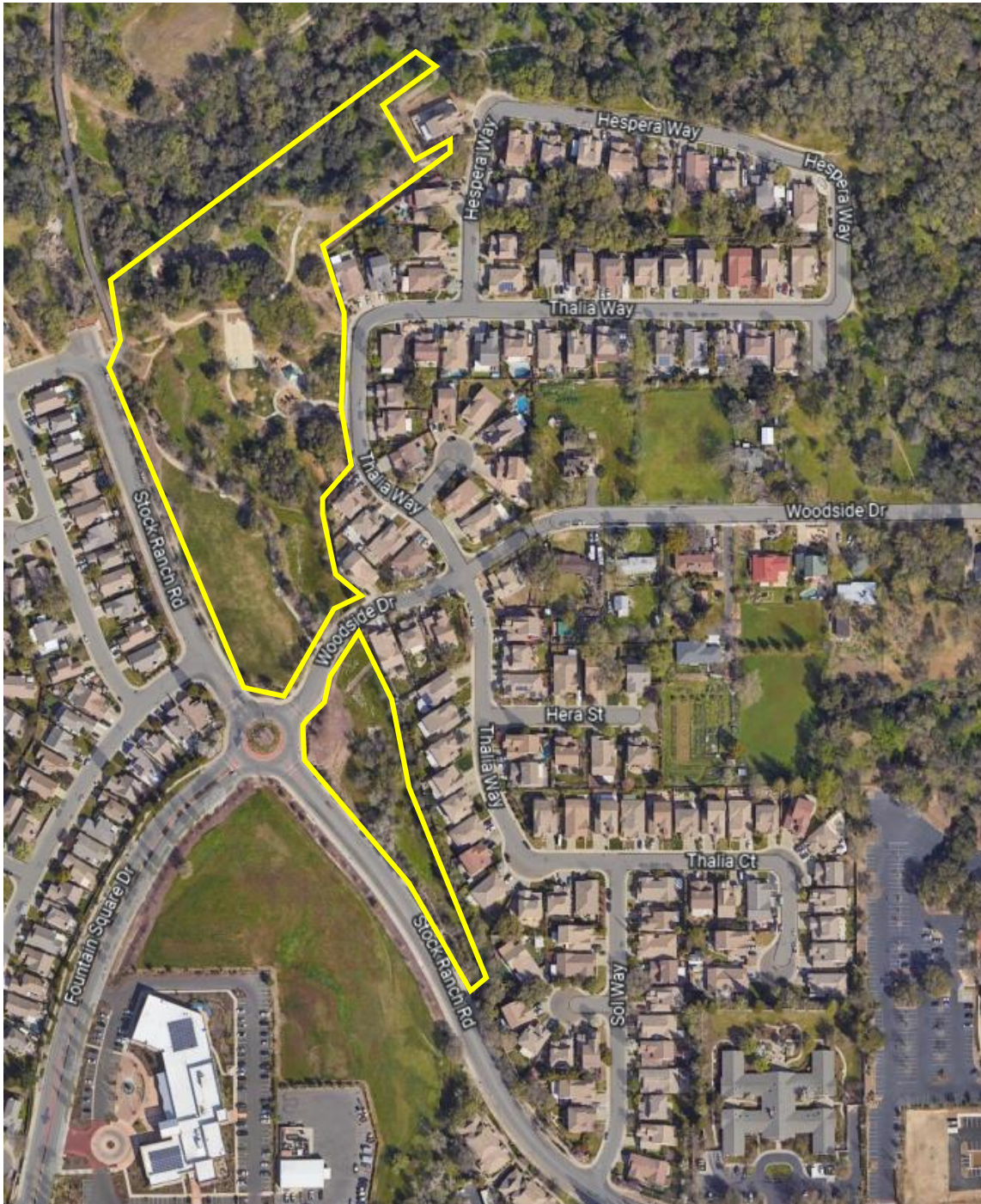
Proposed Amenities

- None



Twin Creeks Open Space

Van Maren Nature Area
6601 Thalia Way
Citrus Heights
3 Acres



Park Boundary

Primary Trails

Stream or Waterway

Seasonal Mowing

Fuel Reduction



Management Highlights

Goal

To maintain the open space in a natural setting that provides walkability and connectivity for the neighborhood.

Past and Ongoing Maintenance

- Litter removal

Proposed Additional Maintenance for 2022-2025

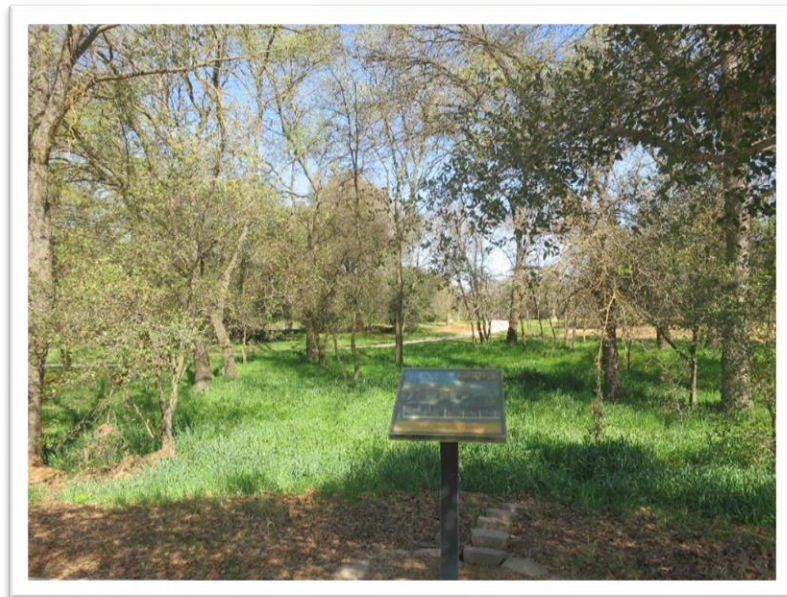
- None

Maintenance Level

- Level 1

Proposed Amenities

- None

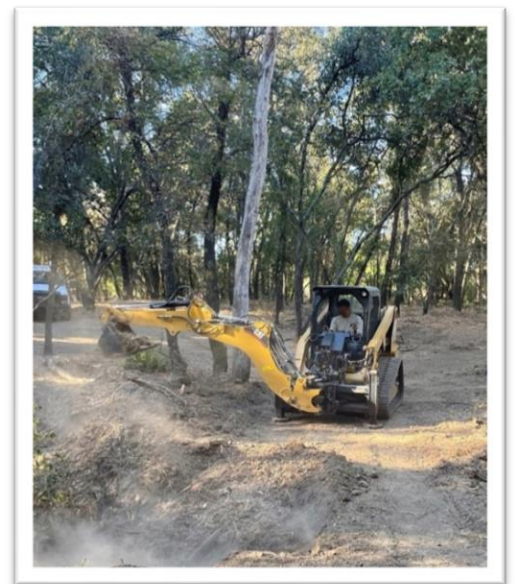


Van Maren Nature Area

8.0 OPEN-SPACE ADDITIONAL MAINTENANCE

Schedule of order

- Foothill Community Park Nature Area
Complete cleaning of the highway fence line
- Sunrise Oaks Open Space
Tree Skirt raising North side of property near the school
Complete log removal
- Twin Creeks Open Space
Fuel Reduction southwest side of creek
- Shadowcreek Open Space
Fuel Reduction from Woodleigh Dr., west
to property line
- Matheny Open Space
Complete area to be brought back to
Management Guidelines Standards
Complete log removal
- Indian River
Fuel Reduction east side of creek
- Tall Tree
Fuel Reduction west side of creek
- Cherry Creek West Park Preserve
Complete area to be brought back to Management Guidelines Standards
- Crosswoods Community Park Nature Preserve
Install property boundary markers across the creek from the tennis court
Overall Fire Fuel reductions
- Arcade Creek Park Preserve
Fuel reduction North side of the creek
- Mariposa Open Space
Complete fuel reduction



Edgecliff Open-Space

9.0 AGENCIES SUPPORTING OUR EFFORTS

The City of Citrus Heights is responsible for the following:



- Sediment removal in the basins
- Removal of fallen trees in the creek
- Trimming of low branches in the floodway
- Clearing upstream and downstream of out flows
- Repair or replacement of an inlet or outlet structure
- Animal controls within the boundaries of Citrus Heights

Citrus Heights Water District is responsible for the following:



- Potable water mainline that parallels the pedestrian bridge
- Fire hydrants

Sacramento County is responsible for the following:



- Animal controls outside the boundaries of Citrus Heights
- Vector (mosquito) control
- Manage creek permits and processes

The State of California Department of Fish and Wildlife is responsible for the following:



- Animal controls outside the boundaries of Citrus Heights

